

BRITISH COLUMBIA RED LIGHT CAMERA PROJECT



- **INTERSECTION SAFETY**
- **ACCIDENT REDUCTION**
- **PHOTO ENFORCEMENT**

EXPERTISE IN:

- Systems Operations
- Legislative Recommendations
- Law Enforcement Procedures
- Project Management
- Engineering Design

DEPLOYMENT:

- Feasibility & Benefit Studies
- Implementation Strategies
- Product Research & Procurement
- Testing & Commissioning
- Technical Training
- Technology Transfer
- Public-Private Partnering



Ministry of Transportation & Highways

SHAFLIK
ENGINEERING

BRITISH COLUMBIA

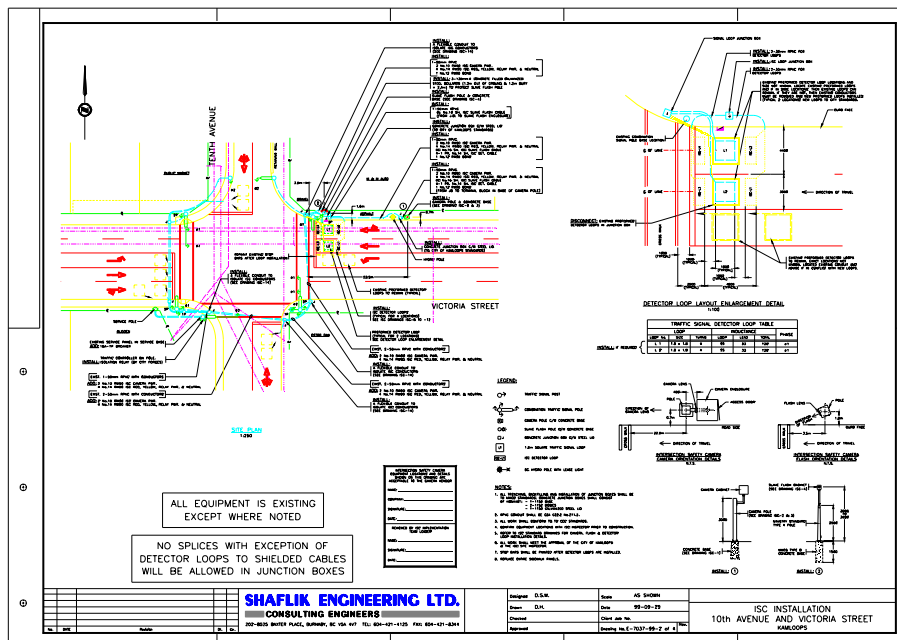
RED LIGHT CAMERA PROJECT

In early 1998 the Province of British Columbia, undertook a safety-oriented initiative to reduce intersection accidents, and thereby reduce the related social and economic costs. The Province's Intersection Safety Camera Program (commonly known as Red Light Cameras) was developed to implement this safety initiative.

Although red light camera systems have been implemented in the past, many of these systems have been procured and deployed using a turnkey method. These turnkey systems can be product specific and supplier dependent. The Province of BC desired to research and implement a system that would not be supplier dependent, thereby offering greater internal control over the legal and operational characteristics of the system.

In order to effectively deploy such a system, with its complex technical and legal challenges, Shaflik Engineering and the British Columbia Ministry of Transportation and Highways formed a Project Management Team to implement the project. This highly specialized team is made up of experts in the fields of government operations, legislation, legal procedures, law enforcement, the auto insurance industry, project management, traffic safety engineering, and intelligent transportation systems (ITS) engineering.

The Project Management Team offers a complete range of services, both technical and legal, to agencies and jurisdictions interested in the Project Management method of implementation for a red light camera system. The Project Management Team is also excellently positioned to act as Owner's Engineer for those jurisdictions wishing to use the turnkey method of project delivery. Technology transfer and agency partnering is a key component of all services provided.



For more information contact:
SHAFLIK ENGINEERING at:

www.shaflik.com

SHAFLIK
ENGINEERING